



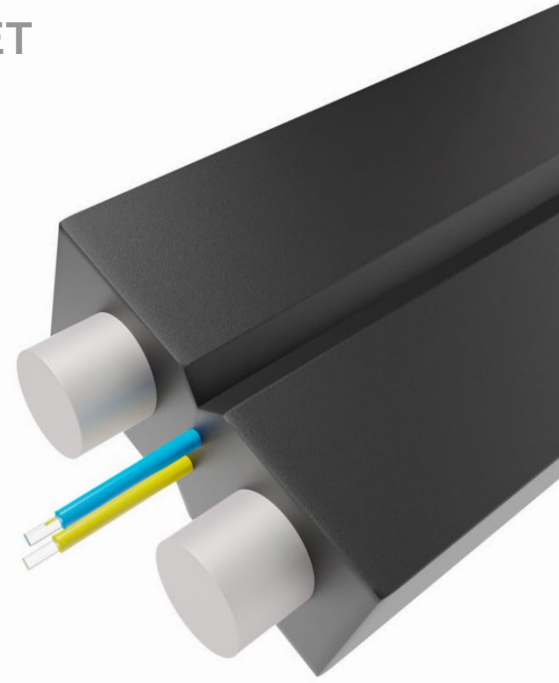
Beyondtech PureOptics™ Drop Flat Square Fiber Optic Cable

Order Code: BTDFSA

Specifically designed for both indoor and outdoor FTTH installations, this versatile drop cable features a central optical fiber protected by a robust LSZH (Low Smoke Zero Halogen) jacket, ensuring fire safety in various environments. Reinforced with Fiber Reinforced Plastic (FRP) elements, it offers enhanced flexibility and durability under environmental stress. Ideal for last-mile connections, this cable provides reliable data transmission, easy installation, and consistent performance, making it an excellent choice for direct FTTH links to the ONT in residential and commercial networks.

FEATURES AND BENEFITS

- **Compact Drop Design:** Its flat, compact form factor allows for efficient space utilization, making it ideal for streamlined installations in tight environments and reducing overall installation costs.
- **Lightweight and Flexible Construction:** Engineered for ease of handling, the cable's flexibility enables quick installations, reducing labor time and enhancing installation efficiency in FTTH applications.
- **Built with Quality Materials:** Constructed with premium materials to ensure durability and resilience, delivering reliable performance in both indoor and outdoor settings.
- **Low Attenuation, High-Quality Fiber:** Equipped with premium fiber, this cable supports high-speed data transmission over extended distances, guaranteeing stable and consistent connectivity for FTTH networks.



SPECIFICATIONS

Fiber Type:

Single-mode G.652.D

Wavelengths:

1310 nm, 1490 nm, 1550 nm and 1625 nm.

Number of Fibers:

1, 2, and 4 strings

Jacket Material:

LSZH (Low Smoke Zero Halogen)

Color Coding:

Natural/Blue,Orange,Green, Brown

OD of cable(mm):

2.0×3.0±0.1

Test Metodology:

IEC 60794-1-E1
IEC 60794-1-E3
IEC 60794-1-E4
IEC 60794-1-E6
IEC 60794-1-E7
IEC 60794-1-F1

<p>A</p> <p>Beyondtech</p>	<p>B</p> <p>Cable Outer Sheath:</p> <ul style="list-style-type: none"> • LSZH (Low Smoke Zero Halogen) • PE (Polietileno) • HDPE (High Density PE) • PVC (Polyvinyl Chloride) 	<p>C</p> <p>Strength Member type:</p> <ul style="list-style-type: none"> • FRP: fiber-reinforced polymer • KFRP: Kevlarr-reinforced Polymer • AFRP: Aramid-reinforced Polymer • SW: Steel Wire
<p>D</p> <p>N° Fibers:</p> <p>1,2, 4, 8, or 12</p>	<p>E</p> <p>Standard :</p> <ul style="list-style-type: none"> • G.652.D • G.657.A1 • G.657.A2 • G.657.B3 	

Other options are available.
Ask your Beyondtech sales representative.

Custom cabling per request



For more information on Beyondtech Premium Warranty, visit beyondtech.us/warranty



DISCLAIMER

This datasheet is from authorship and exclusive property of Beyondtech. His reproduction is banned in the integral or partially without mentioning his authorship, as well as the alteration of his content or context.

IMPORTANT NOTICE

All statements, technical information, and recommendations related to Beyondtech products are based on information believed to be reliable, but the accuracy or completeness is not guaranteed. Before using this product, you must evaluate it and determine if it is suitable for your intended application. You assume all risks and liability associated with such use. Any statements related to the product which are not contained in Beyondtech current publications, or any contrary statements contained on your purchase order shall have no force or effect unless expressly agreed upon, in writing, by an authorized officer of Beyondtech.