

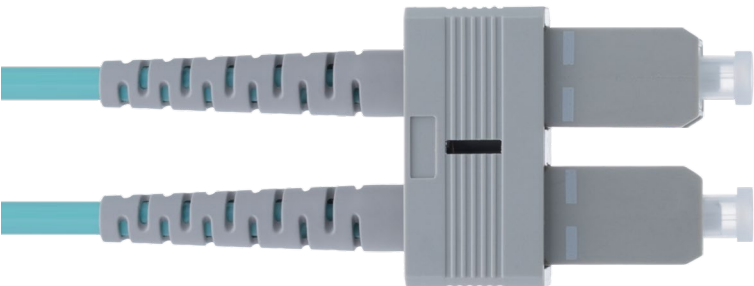
# Beyondtech PureGigabit™ Fiber Patch Cables

BTWSCUSTU-3DC-XXXP

Beyondtech's high-quality SC to ST laser-optimized Fiber Patch Cable 50/125µm OM3 Multimode fiber is specially designed for fast Ethernet, Fiber Channel, Gigabit Ethernet Speeds, data center, premises, educational, LAN, SAN, commercial and Asynchronous Transfer Mode (ATM) applications. It supports video, data and voice services.

## FEATURES AND BENEFITS

- Our OM3 fiber patch cords conform with ITU-T G.651.1, TIA/EIA 492AAAC and IEC60793-2-10 A1a.2a standards and complies with all RoHS environmental specifications.
- Our OM3 cables have a 1500 MHz-km bandwidth and a 2.3dB/km maximum attenuation at 850 nm light sources. They also have a 500 MHz-km bandwidth and a 0.6dB/km maximum attenuation at a 1300 nm wavelength.
- This multimode patch cord operate at -20°C to +70°C and have a minimum installation bending radius of 5 cm and a minimum long term bending radius of 3 cm.
- Our OM3 LOMMF patch cords connects to 10GBase-SR, 10GBase-LRM, SFP+ and QSFP+ transceivers for 10Gb networks. LC duplex connectors are joined with a plastic clip, easy to remove to separate the connectors.



## SPECIFICATIONS

**Color Code:**

Aqua

---

**Bend Radius:**

Minimum / 5cm

---

**Cable Jacket:**

3.0mm LZSH

---

**Operating Temperature:**

-4° to 158° F (-20° to +70° C)

---

**Core:**

OM3 50/125µm

---

**Jacket:**

Standard Zip Cord Duplex

---

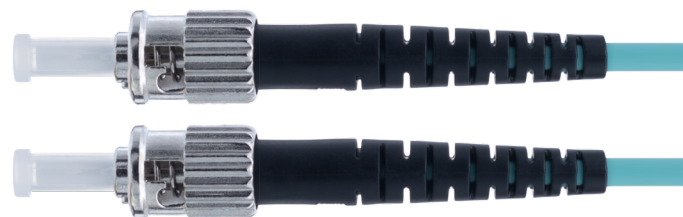
**Termination:**

Connector A (SC) / Connector B (ST)

---

**Features:**

Connectors feature dust caps on the tips for protection. SC and ST duplex assemblies are attached with easy-removable clips.



| A  | B | C  | D | E  | F | G | H | I | J  | K  |
|----|---|----|---|----|---|---|---|---|----|----|
| BT | P | LC | U | LC | U | 0 | D | C | 1M | 1P |

**Example:** BTPLCULCU0DC1M1P = Beyondtech | Patch Cables | LC | UPC | to LC | UPC | OS1 | Duplex | 3.0mm PVC | 1Meter | 1 Pack

|   |   |  |
|---|---|--|
| <b>A</b><br>Beyondtech  | <b>B</b><br><b>P</b> Fiber Patch Cable<br><b>C</b> Fiber Connectors<br><b>A</b> Fiber Adapters<br><b>AT</b> Fibre Attenuator<br><b>PI</b> Fiber Pigtail | <b>C</b><br><b>A Connector:</b><br>SC / LC / ST / FC / MJ (MTRJ)   |
| <b>D</b><br><b>A Polishing:</b><br><b>P</b> PC<br><b>U</b> UPC<br><b>A</b> APC  | <b>E</b><br><b>B Connector:</b><br>SC / LC / ST / FC MJ (MTRJ)  | <b>F</b><br><b>B Polishing:</b><br><b>P</b> PC<br><b>U</b> UPC<br><b>A</b> APC   |
| <b>G</b><br><b>0</b> OS1 Single-mode 9/125µm<br><b>1</b> OM1 Multi-mode 62.5/125µm<br><b>2</b> OM2 Multi-mode 50/125µm<br><b>3</b> OM3 Multi-mode 50/125µm 10G<br><b>4</b> OM4 Multi-mode 50/125µm 100g | <b>H</b><br><b>S</b> Simplex<br><b>D</b> Duplex   | <b>I</b><br><b>A</b> 0.9mm LSZH<br><b>B</b> 2.0mm LSZH<br><b>C</b> 3.0mm LSZH<br><b>D</b> 0.9mm PVC<br><b>E</b> 2.0mm PVC<br><b>F</b> 3.0mm PVC  |
| <b>J</b><br><b>Length:</b><br>Number X (M: Meters / FT: Feet)   | <b>K</b><br><b>Pack:</b><br>Number X (P: Pack)  | <b>E, F:</b> In case of Fiber pigtail leave blank<br><b>LSZH</b> (Low Smoke Zero Halogen)<br><br>Other options are available.<br>Ask your Beyondtech sales representative.<br><br><b>1</b> Jacket Type (OFNG)<br><b>2</b> Connector Type: E2000, MTRJ, Female/Male, MTP<br><b>3</b> Custom cabling per request |



For more information on Beyondtech Premium Warranty, visit [beyondtech.us/warranty](https://beyondtech.us/warranty)

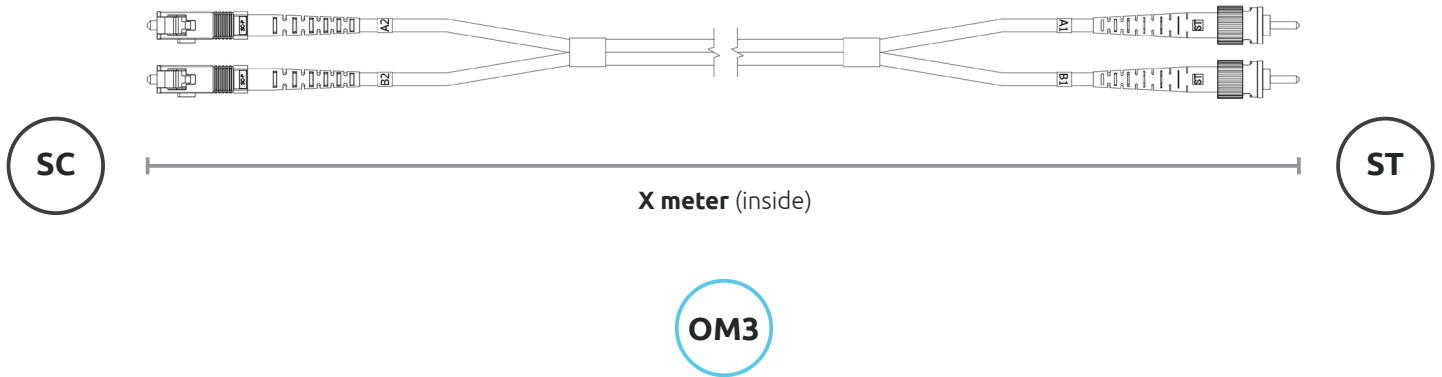


#### DISCLAIMER

This datasheet is from authorship and exclusive property of Beyondtech. His reproduction is banned in the integral or partially without mentioning his authorship, as well as the alteration of his content or context.

#### IMPORTANT NOTICE

All statements, technical information, and recommendations related to Beyondtech products are based on information believed to be reliable, but the accuracy or completeness is not guaranteed. Before using this product, you must evaluate it and determine if it is suitable for your intended application. You assume all risks and liability associated with such use. Any statements related to the product which are not contained in Beyondtech current publications, or any contrary statements contained on your purchase order shall have no force or effect unless expressly agreed upon, in writing, by an authorized officer of Beyondtech.



**SKU:** BTPSCUSTU-3DC-XMXP

**Name:** SC to ST Multimode Fibre Patch Cord Duplex - XM - UPC - 50/125 OM3 10Gb Aqua (LSZH) - Beyondtech Optical - PureOptics Cable Series **Cable Jacket:** 3.0mm LZSH

**Length (ft.):** X

**Length (m):** X

**Connector type A:** SC

**Connector type B:** ST

**Color:** Aqua

**Core:** OM3 50/125µm

---

**WORLDWIDE CORPORATE HEADQUARTERS**

Rediret UK LTD.  
London UK.  
info@rediret.com  
+44 (020) 3289.1190

Beyondtech Europe  
Madrid, ES  
info@beyondtech.es  
+34 (747) 869.449

Beyondtech Americas  
Miami, FL, USA  
info@beyondtech.global  
+1 (305) 897.3507

For more information, visit our website [www.beyondtech.global](http://www.beyondtech.global), contact us at [customer@beyondtech.global](mailto:customer@beyondtech.global) or call **+1 (844) 283.5266** (toll-free).